



CARGO PROTECTORS, INC.

633 3RD Street NE, St. Cloud, MN 56304

www.cargoprotectors.com

Toll-Free: (800) 728-3038

Phone: (320) 202-6567

Fax: (320) 202-7792

sales@cargoprotectors.com

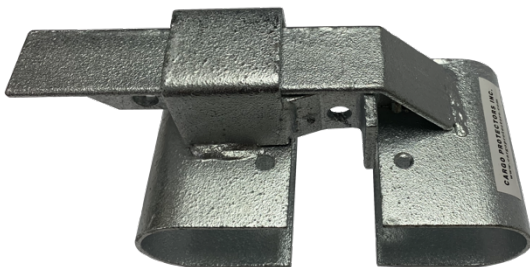
FL100 / FL200 Fence-Loc™

Double Drive Heavy Duty Industrial Gate Latch

Provides High Security for Fenced Areas

- T-Bar Design allows padlocks to be accessed from both sides of the gate
- Built-in bolt cutter protection
- Fits round gate frames up to 2" diameter
- Fully adjustable for gate openings of 2" to 6"
- No drop rods required

FL100 Fence-Loc™

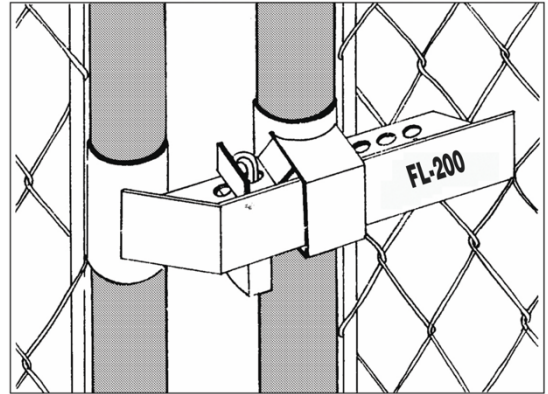
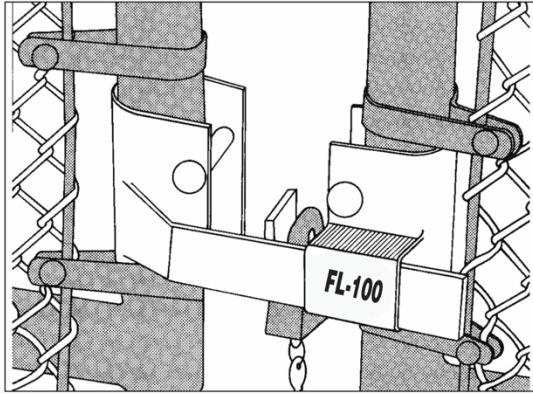


- Simple two bolt installation
- Hardware included
- Locked gate can't be opened if bolts are removed

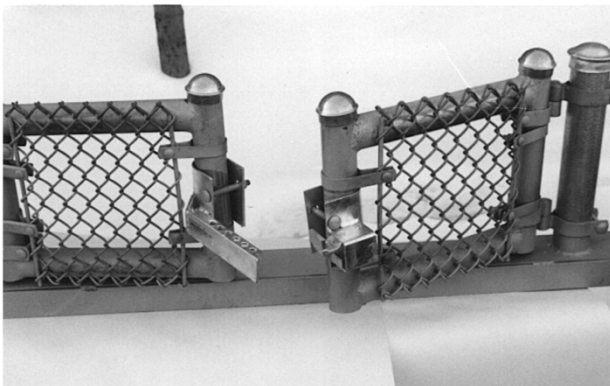
FL200 Fence-Loc™



- Installs on gate during fabrication
- No hardware required

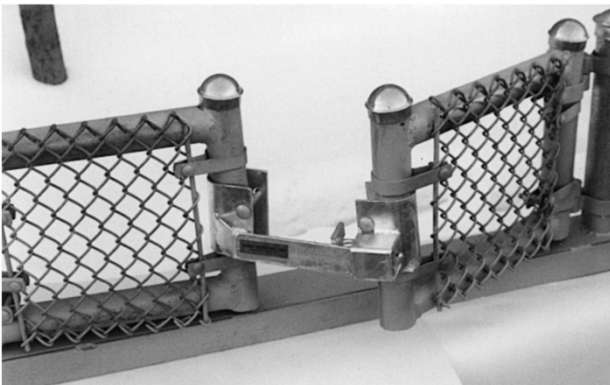


INSTRUCTIONS

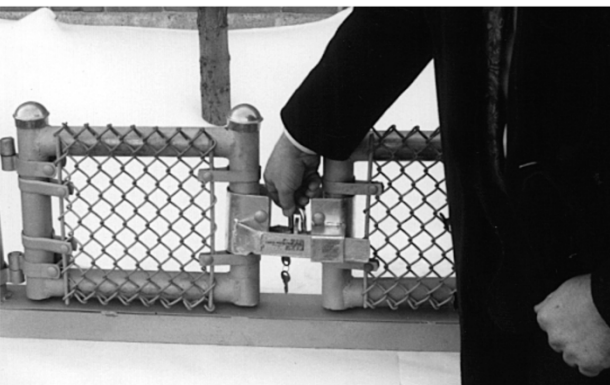


- Install Gate Latch 3 ½ to 4 feet above ground.
- Bolts for each latch piece must be installed so that each latch piece can rotate on frame.

If the gate frame has 1-5/8" posts, use the inside hole for the bolts.



- Rotating enables each latch piece to slide into one another at the correct alignment.



- Use bands for proper alignment.
- Gate Latch can now be padlocked through the aligned holes.